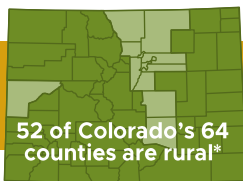


This infographic is part of a series that explores health from the perspectives of different populations. Developed using health survey data, they collectively demonstrate Coloradans' varying experiences of health and health care.

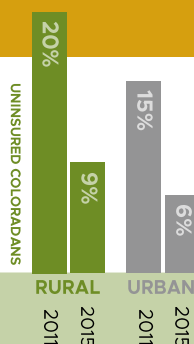
Over **750,000** people live in rural Colorado

\*Rural: defined as a county with no cities of more than 50,000 people.



**SINCE 2011** Colorado's population has grown by **325,000** people, but less than **4,000** of those live in a rural county

Rural Coloradans are **more likely to be uninsured**, but the gap is closing



**108,316** RURAL COLORADANS gained coverage since 2011, largely due to implementation of the Affordable Care Act



Most rural Coloradans have a usual source of care, but **many have trouble accessing that care**

**87%** of rural Coloradans have a usual source of care

OF RURAL COLORADANS:

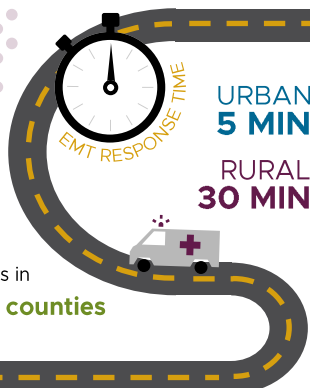
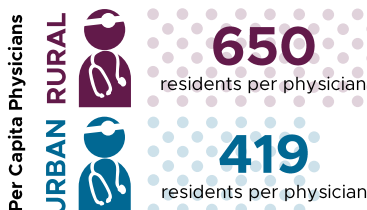
**Over 50,000** Couldn't afford medical care

**Over 90,000** Didn't get care due to lack of transportation

**Over 75,000** Had a provider refuse their insurance

BARRIERS TO CARE

There is a **shortage of health care providers** to serve rural Colorado



??? mi to nearest hospital

There are no hospitals in **13 of Colorado's counties**

Coloradans living in rural areas face increased challenges in accessing health care, and good access is important for good health. To achieve a healthier rural Colorado, we must improve access to care across the state.

Sources:

Colorado Access to Care Index (2015): <http://coloradohealthinstitute.org/COAccessIndex>  
 Colorado Health Institute (2013-2015): <http://coloradohealthinstitute.org>  
 Colorado Rural Health Center (2015): <http://www.coruralhealth.org>  
 US Census Bureau (2014): <http://factfinder2.census.gov>